



7V—2 QT. BAKER—3.50



7W—3 QT. BAKER—4.50



7U—10 OZ. BAKER—1.50



7HS—SALT & PEPPER—1.50



7PS—9" TRAY—1.50



7T—6 CUP TEA POT—3.00



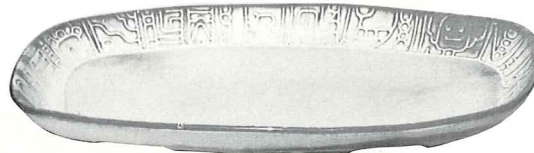
7FL—10" PLATE—2.00
7F—9" PLATE—1.75
7G—7" PLATE—1.00
7E—5" SAUCER—.75



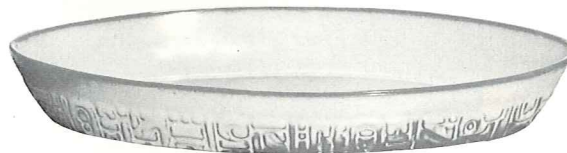
7B—SUGAR WITH LID—1.75



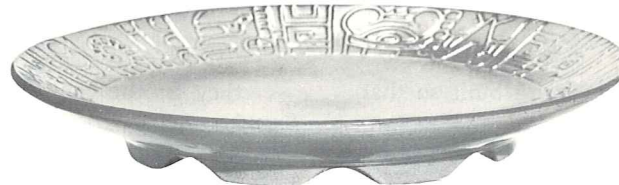
7A—6 OZ. CREAMER—1.25



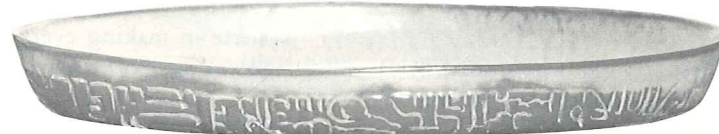
7QS—13" STEAK PLATTER (SHALLOW PLATTER)—2.00



7Q—13" DEEP PLATTER—3.00



7FC—15" CHOP PLATE—7.00



7P—17" DEEP PLATTER—6.00



7D—60 OZ. PITCHER—3.50



7C—CUP—1.00



7CL—8 OZ. MUG—1.00



7M—14 OZ. MUG—1.50



7XO—8 OZ. FRUIT—.80



7X—14 OZ. CHILI-SOUP—1.00



7XL—20 OZ. SALAD—1.25



7N—1 QT. VEGETABLE BOWL—2.00



7J—2 CUP TEAPOT—2.00